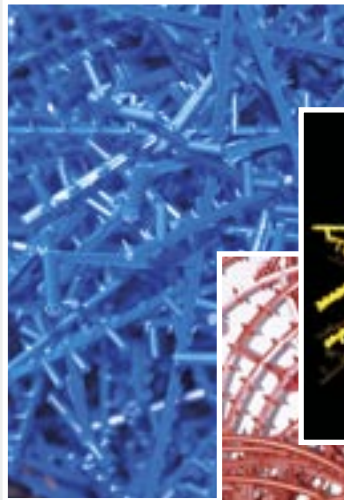


CentriCut[®] separator

For the separation and controlled feed of tangled plastic sprue

Your problems

- Densely tangled waste from injection mouldings
- High cost, manual material separation
- High risk of cut injuries
- Uneven use of the granulator
- and many more...



Examples of sprue



Experts in granulators
NUGA AG

Our solutions

- Tipping mechanism for skeleton containers
- Separation of bulky tangles through chain driver
- Elimination of manual granulator feeding
- Even material infeed into the granulator
- and many other advantages...

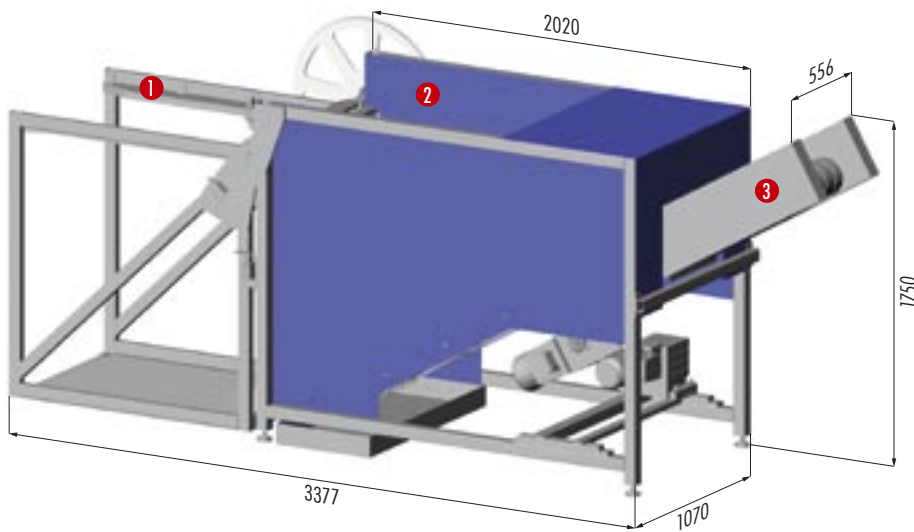
**the smart
cutting
revolution**



CentriCut[®] separator

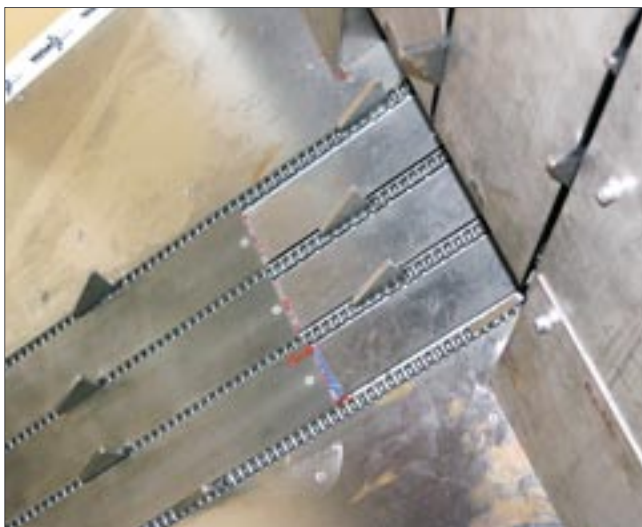
For the separation and controlled feed of tangled plastic sprue

- ❶ Dumping device for boxes and container
- ❷ Bin with chain separator
- ❸ Discharge conveyor



	Separator
Drive power [kW / hp]	2.5 / 3.75
Hopper capacity [m ³]	1
Delivery rate* [kg]	Up to 1,000
Working width [mm]	390
Maximum piece size [mm]	≤ 100

Throughput varies depending on the type, size and density of the processed material / Technical changes reserved



Conveyor chain with separating teeth



Separation of sprue

CentriCut[®]
the smart cutting revolution



NUGAAG
Kunststoff-
schnidmühlen



Hauptstrasse 64a CH-9436 Balgach
T +41 71/7200040 F +41 71/7200045
centricut@nuga.ch www.centricut.ch