



IBAK ILP

Laser Profiler

Pipe deformation measurement

Analysis software

Recording in MPEG format

Accuracy 0.5%

MODULAR I and II compatible

IBAK ILP



Example of a laser profile

IBAK ILP (Laser Profiler) reliably locates and measures deformations in main-line sewers. A laser projects a ring on the inner pipe wall in the camera's line of sight. The resulting images are recorded digitally in MPEG format. The special analysis software calculates a digital profile from the acquired data and processes this into various graphs. Different profiler models of light-weight synthetic material are available for IBAK pan and rotate cameras.

System Technical Data:

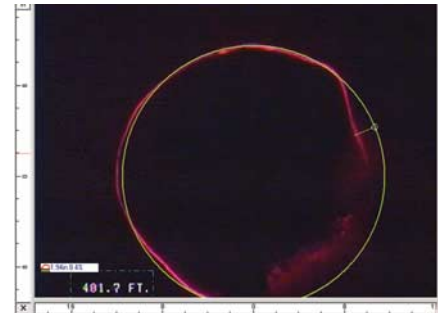
- For operation in 150 mm (6 in.) pipes upwards, 200 mm (8 in.) upwards with PANORAMO
- 180 measurements per each profile
- Recording in MPEG format
- Manual and automatic analysis

Calculation of

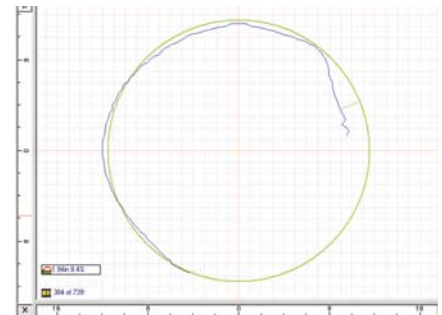
- Reduction of diameter
- Deformation levels
- Erosion damage

Location of

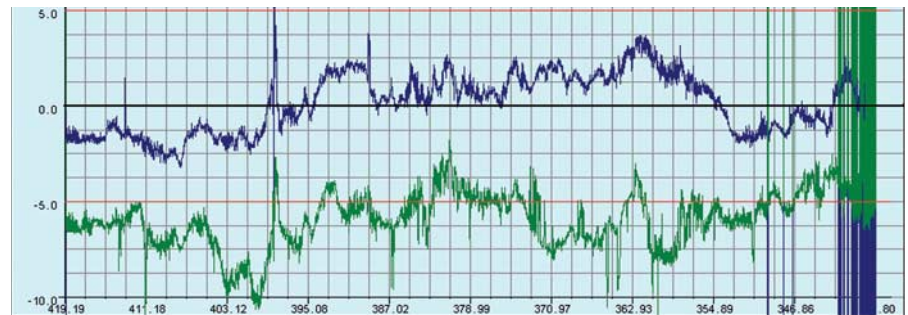
- Pipe displacements
- Obstructions to flow
- Liner uniformity after relining



Deformation measurement, visual display



Deformation measurement, digital display



Deformation measurement, minimum and maximum diameter report



IBAK Helmut Hunger GmbH & Co. KG
Wehdenweg 122 · 24148 Kiel · Germany
Tel. +49 (0) 431 7270-0
Fax +49 (0) 431 7270-207
info@ibak.de · www.ibak.de