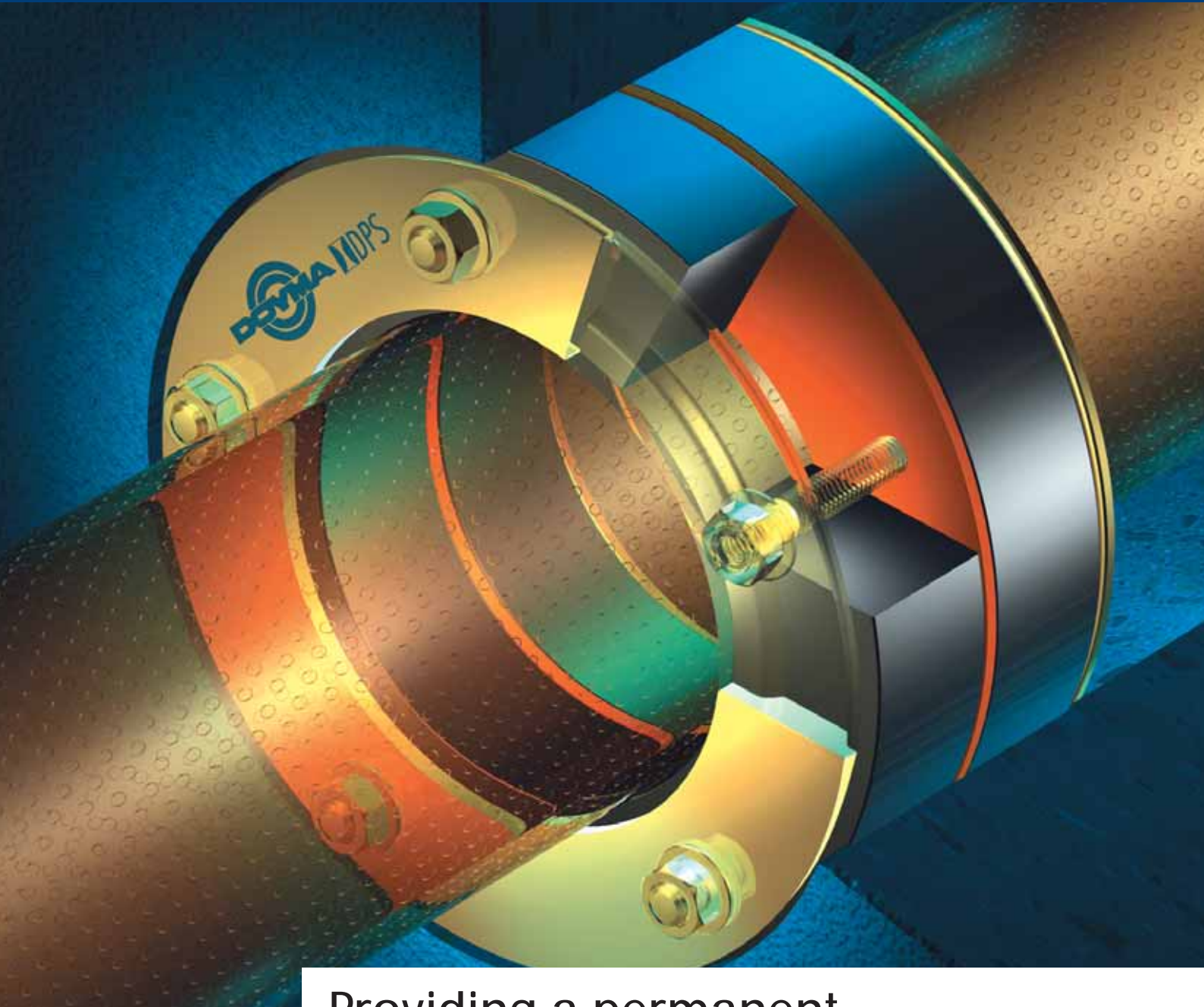


Preventing structural damage



Providing a permanent seal for pipes and cables



Führend durch Wand und Decke

DOYMA GmbH & Co

We are the sealing systems specialists for pipes, cables and ducts running through walls, ceilings and floors.

With its headquarters in Oyten near Bremen, our company employs about 120 people in the production, development and sales of our products, both at our company offices and in the field. Continual training of our employees, dialogue with our partners and a constant eye on potential market problems ensure that our brand receives the best possible support - both nationally and internationally. A five-year warranty, innovative product development, targeted involvement in construction projects, trained sales teams offering expert advice are just some of the services we provide.

This ensures our superiority in the provision of systems and makes us unbeatable down to the very last detail.

Add to this client loyalty and competitive prices, and you have the ideal foundations for a successful partnership. A presence at leading national and international trade fairs, and the provision of specialist seminars and product training sessions for our partners secures our pre-eminence in the field of sealing systems for service ducts.

Providing construction with permanent protection against structural damage.

The standard gasket insert comprises minimum 5 mm thick, asymmetrically profiled steel rings with DPS*, which are electro-galvanised, yellow chromated and sealant coated. This kind of surface sealing effects a protection against corrosion which is 35% higher than by any other galvanic refining process.

According to pressing or non-pressing water, one or two 27 mm thick elastomeric rings which, as standard are of a low compression EPDM called "Doyma-Grip", seal the void between the pipe or cable and the sleeve or core bore. Gasket inserts with two elastomeric rings have an additional 3 mm thick orange-coloured EPDM middle ring to ensure homogenous and uniform distribution of the compression pressure on the service pipe or cable and sleeve/core bore.

Asbestos-free cement pipe sleeves provide an homogenous and durable bond with the concrete and eliminate shrinkage cracks.

*DPS - Double Profile System up to NB 350

Some example of products that have been tailor-made to meet customers' needs:

To ensure a 100% seal on curved walls, the gasket insert is mounted in a steel pipe sleeve welded to a curved base plate. This pipe sleeve is adapted to the structural specifications of the wall by an appropriately-designed fixed and loose flange construction.



In this case, the pipes entered the wall at an angle, and to provide an adequate seal against pressing water an angled pipe sleeve had to be installed in front of the wall. In addition, a split version of this multiple ducting system had to be manufactured as the pipes had already been laid.

This plate construction with several steel pipe sleeves seals a number of service ducts against pressing water. A fitting of these dimensions is required when a standard multiple design is not sufficient.



Here, an opening was made for a pipe which was much too large for the existing pipe external diameter. In this case, a special insert had to be selected, which was fitted as a blind sealing unit with a small opening for the pipe.



Pipes and cables are used to supply industrial plant, along with commercial and residential buildings. All too often the focus of attention is restricted to the function of water, gas, electricity or data supply. Little attention is given to the sealing and housing of the pipes and cables passing through the walls or ceilings until it is

too late and structural damage has already occurred. Doyma offers top quality, tried and tested ducting systems which ensure lasting protection against water and insulation against noise and fire. Doyma therefore provides excellent preventative measures against structural damage.

Examples of problems



A core bore that is no longer required cannot simply be re-filled using the existing core; this closure is not watertight.



The annular gap around a pipe is sealed with foam. Foam loses its dimensional stability over the course of time and the seal is therefore not tight.



When the pipe moves due to temperature fluctuations, in the case of mortar-embedded pipes pictured here, cracks between the pipe and surrounding concrete occur, and the duct loses its seal.



Fire regulations should have been taken into account when both these pipes were passed through the wall. The arrangement in the left-hand picture would allow smoke, fumes and flames to penetrate the opening.



Doyma-Solutions



An optimum solution here is a blind Curaflex® C gasket insert with Aquagard sealant applied to the inside of the core bore.



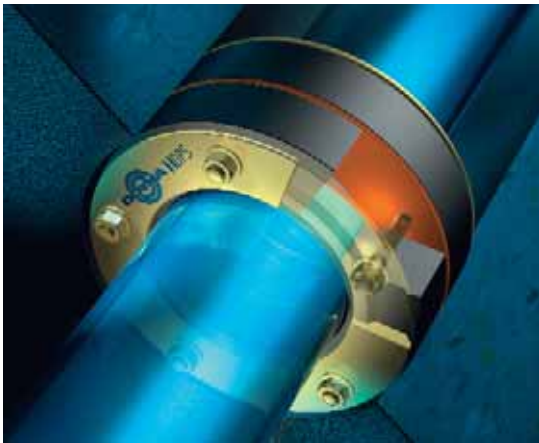
With its long-lasting elastomer rubber seal, Curaflex® C gasket insert offers a permanent, flexible seal for service ducts.



The Doyma Curaflex® C eccentric gasket insert allows for axial movements and angular deviations of the service ducts of up to 15° without losing the pressure seal.

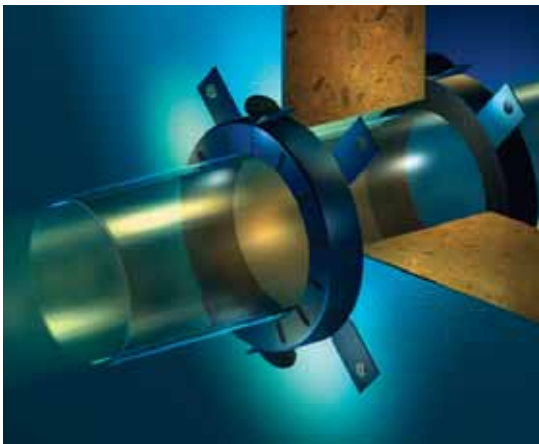


In case of fire, the Curaflam® collar XS shuts off completely flammable pipes with a maximum outer diameter of 200 mm. The collar will be fixed on both sides of a wall or underneath the ceiling and can also be placed around pipes in 45° position.



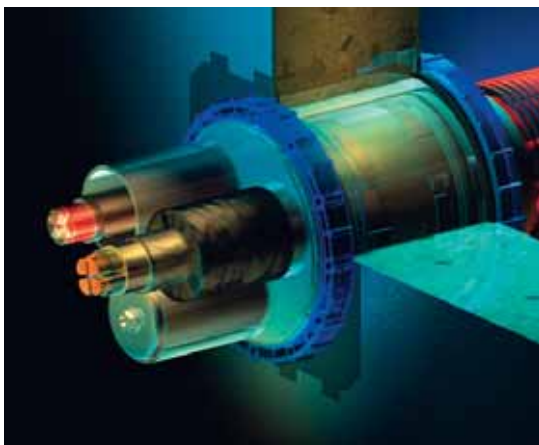
Curaflex® gasket inserts with profile

Deliver top performance!



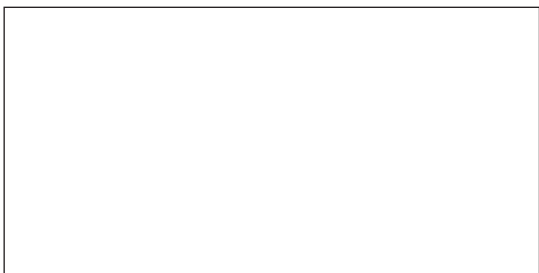
Curaflam® collar XS

Faster than fire!



Curaline® cable duct system

Click - it's tight!



DOYMA GmbH & Co

Sealing Systems for pipes and cables

Mail: export@doyma.de

www.doyma.de



DIN EN ISO 9001

